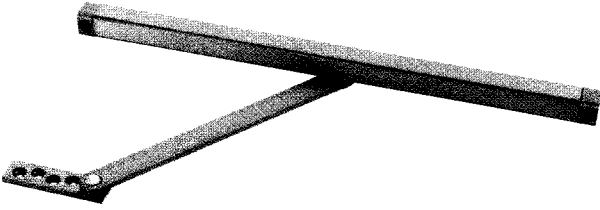


# Glynn Johnson 450 Series Surface Overhead Door Holder/Stop

ROBERT BROOKE AND ASSOCIATES



## 450 Series Medium-Duty

Glynn-Johnson provides the most complete line of overhead holders and stops, offering solutions for the most demanding door control problems. These surface-mounted holders and stops offer the widest variety of functions, materials and finishes to fit all medium- to light-duty applications.

Glynn-Johnson 450 series holders and stops provide reliable and versatile surface-mounted overhead door control for all medium to light-duty applications. The visible components are available in a wide variety of architectural finishes to complement any design. The 450 series holders and stops are designed for installation in virtually all types of doors and frames including doors with conventional butt hinges, offset pivots, continuous hinges, swing clear hinges and many other specialty hinges. The templates provided allow for variable mounting positions, ranging from 85° - 110° of opening.

### Four Models:

- 450H Series Hold-Open Model
- 450S Series Stop-Only Model
- 450F Series Friction Hold-Open Model
- 450SE Series Special Stop-Only Model

### Five Sizes:

- Simple
- Standardized
- Each model is available in five sizes

### Three Options:

- J—Angle Jamb Bracket
- SHIM—Blade Stop Shim Kit
- SOC—Pin-in-Socket Security Screw Package

### Unmatched Convenience:

- Non-Handed
- Improved Compatibility with Door Closers
- Improved Jamb Bracket Design
- Single Acting Doors
- Interior Applications
- Durable
- Easy to Install
- Improved Corrosion Resistance

### Materials and Finishes:

In Brass, 300 series stainless steel or steel, these models offer the broadest range of finishes in the industry to complement any design. Brass and Stainless Steel offer the highest resistance to corrosion, while all these base materials are suitable for normal interior use.

| <b>Finish</b> | <b>Description</b>       |
|---------------|--------------------------|
| US3           | Polished Brass           |
| US4           | Satin Brass              |
| US10          | Satin Bronze             |
| US10B         | Oil Rubbed Bronze        |
| US32          | Polished Stainless Steel |
| US32D         | Satin Stainless Steel    |
| SP4           | Powder Coat Brass        |
| SP10          | Powder Coat Bronze       |
| SP28          | Powder Coat Aluminum     |
| SP313         | Powder Coat Dark Bronze  |
| SPBLK         | Powder Coat Black        |
| 652           | Chrome-like Coating      |

## Models

Glynn-Johnson 450 series holders and stops are designed for medium to light-duty applications. They're ideal for openings that are subject to normal activity, providing protection for the door, frame, hinges and surrounding walls or obstructions.

Designed for improved compatibility with most door closers, all models incorporate popular channel/slide arm design and offset jamb brackets. The improved design makes it easier to change functions in the field, should user requirements change.

### 450H Series Hold-Open

(Suffix H) These models conveniently hold doors open at a predetermined position, permitting unobstructed traffic flow.

These models feature an adjustable automatic Hold-Open that is activated when the door is opened to a preset angle. The Hold-Open tension can be adjusted using an allen wrench through the end of the slider located in the channel at the top of the door. Each meets the 250,000 test cycles required for Grade 1 classification.

### 450S Series Stop-Only

(Suffix S) When the Hold-Open function is not required, the Stop-Only function provides the same effective door control without keeping the door held open. The Stop-Only model may be used on fire doors.

### 450F Series Friction Hold-Open

(Suffix F) Friction Hold-Open models provide an alternative holding method ideal for patient room doors, wardrobe or closet doors, or similar applications where multiple Hold-Open positions are desired. The friction tension can be adjusted using an allen wrench on the slider located in the channel at the top of the door.

585 SOUTH ETON ROAD, P.O. BOX 2010, BIRMINGHAM, MI 48012-2010  
CALL: 1-800-642-2403 FAX: 1-800-642-2406 ASK FOR: GREG

# Glynn Johnson 450 Series Surface Overhead Door Holder/Stop

ROBERT BROOKE AND ASSOCIATES

## 450SE Series Special Stop-Only

(Suffix SE) When Stop-Only models are used in conjunction with single point Hold-Open electronic door closers, the function may be ordered without the shock absorbing mechanism. Used as an auxiliary stop with these closers, they will prolong the life of the closer. The stop location is adjusted using an allen wrench on the stop block located in the channel.

*Note: Caution should be taken when using this option in other applications, as the elimination of the shock-absorbing spring can put added stress on the door and frame.*

## Application Information

### Closer Applications

Glynn-Johnson 450 series models require minimal door and frame preparation. They may be used in conjunction with most surface-applied door closers. In some cases, optional drop brackets may need to be mounted on the closers. These brackets are available from the closer manufacturer.

### UL Classification

The 450 series Stop-Only models are classified by Underwriters Laboratories (UL) as Miscellaneous Fire Door Accessories. This classification applies to use on either Hollow Metal Fire Doors or Wood Fire Doors. These units may be used on doors of any rating. As a reminder, the Miscellaneous Fire Door Accessories (GVUX) section is defined by UL as: "Miscellaneous fire door accessories are intended in the individual Listings. The accessories have been investigated to determine that when installed in accordance with the manufacturer's instructions, the accessories do not adversely affect the fire rating of the fire door and/or fire door frames."

### Dead-Stop Templating:

For situations where a wall or similar obstruction is in place at an opening angle of 110° or less (e.g. doors that open back-to-back), dead stop templating should be used. This includes all Hold-Open, Friction and Stop-Only models, except when the "SE" option is used. The Dead Stop position is reached when the shock-absorbing spring is fully compressed, allowing an initial degree of opening of 5° to 7° less than the Dead Stop opening.

*Example: If the holder is templated for 100° Dead Stop, the door will hold open somewhere between 93° to 95°, and no further than 100°.*

*Note: Do not use dead-stop templating on the 450SE Series since there is no shock-absorbing spring.*

### Environmental Conditions:

To assure a long operating life for holders and stops, consider the environment where they will be used. Doors that open to the exterior of a building or are subject to corrosive conditions should have a holder constructed primarily of stainless steel, brass or bronze materials. For interior doors, steel material may be acceptable, although brass and bronze substrates will provide a more attractive architectural grade finish.

### Heavy-Use Applications:

Where doors and frames are subject to heavy use and abuse, a heavy-duty holder or stop should be considered. Also heavy-duty units should be considered on exterior doors subject to wind.

## Options

### Suffix J (Angle Jamb Bracket):

An additional option on the 450 Series is the Angle Jamb Bracket for hinge-side or flush transom mounting. The angle jamb bracket affixes to the standard jamb bracket. If ordered with the overhead add suffix J. If needed separately order 450J-Finish.

### Suffix SHIM (Blade Stop Shims):

Shim kits are available in 3 sizes:  
450 SHIM1 is a 3/16" Shim Kit  
450 SHIM2 is a 3/8" Shim Kit  
450 SHIM3 is a 9/16" Shim Kit

If ordered with overhead, add suffix SHIM (1, 2 or 3). If needed separately order 450SHIM (1, 2 or 3)-Finish.

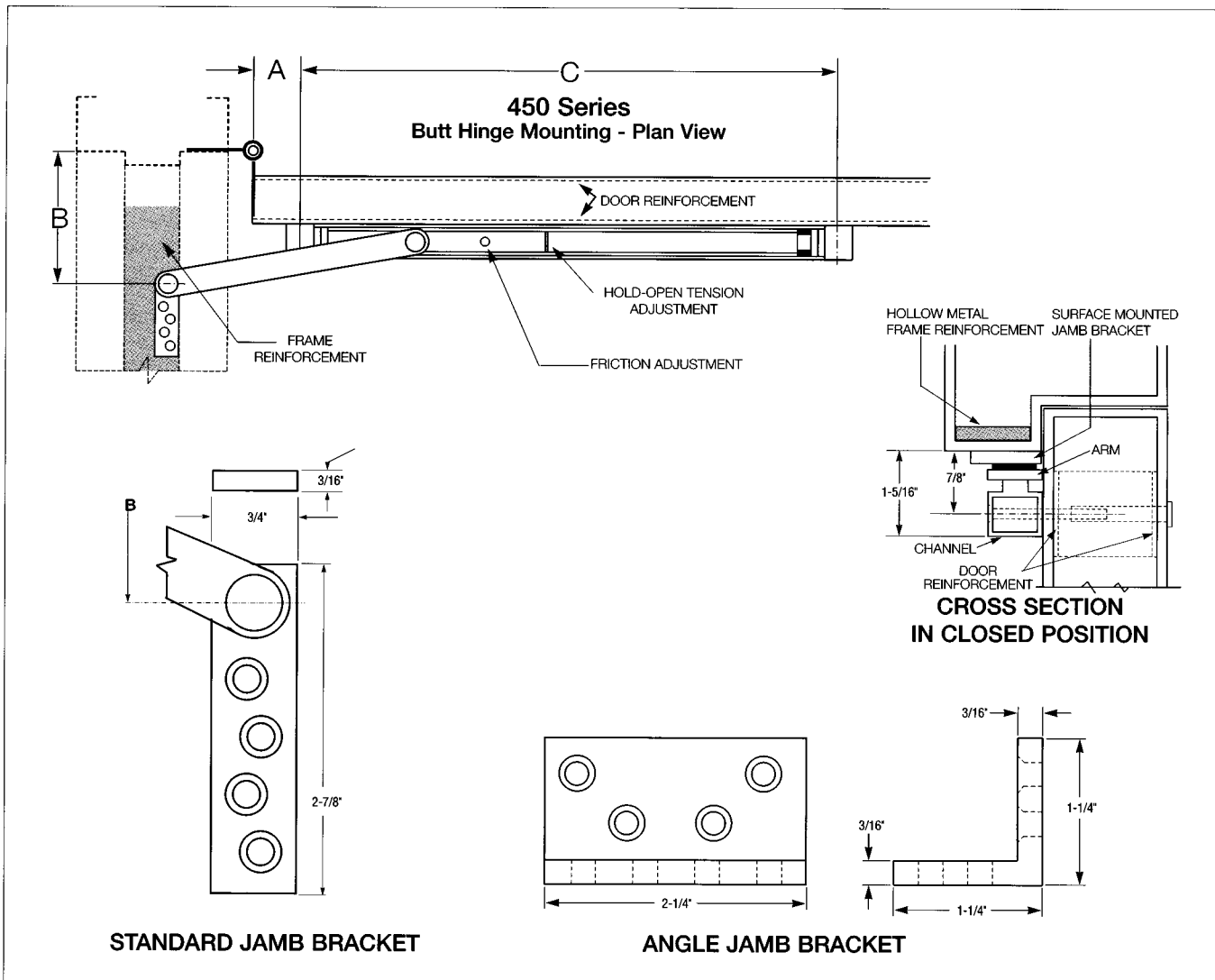
### Suffix SOC (Pin-in-Socket Security Screw Package):

A screw package with pin-in-socket screws for mounting the channel to the door and the jamb bracket to the frame is provided instead of the standard screw package.

585 SOUTH ETON ROAD, P.O. BOX 2010, BIRMINGHAM, MI 48012-2010  
CALL: 1-800-642-2403 FAX: 1-800-642-2406 ASK FOR: GREG

# Glynn Johnson 450 Series Surface Overhead Door Holder/Stop

## ROBERT BROOKE AND ASSOCIATES



| 450 Series Sizing Chart |              |           |           |          |              |           |           |          |
|-------------------------|--------------|-----------|-----------|----------|--------------|-----------|-----------|----------|
| BUTTS/OFFSET PIVOTS     |              |           |           |          | CENTER HUNG  |           |           |          |
| SIZE                    | DOOR OPENING | STOP ONLY | HOLD OPEN | FRICTION | DOOR OPENING | STOP ONLY | HOLD OPEN | FRICTION |
| 1                       | 18"-23"      | 451S      | 451H      | 451F     | 23-1/16"-27" | 451S      | 451H      | 451F     |
| 2                       | 23-1/16"-27" | 452S      | 452H      | 452F     | 27-1/16"-33" | 452S      | 452H      | 452F     |
| 3                       | 27-1/16"-33" | 453S      | 453H      | 453F     | 33-1/16"-39" | 453S      | 453H      | 453F     |
| 4                       | 33-1/16"-39" | 454S      | 454H      | 454F     | 39-1/16"-45" | 454S      | 454H      | 454F     |
| 5                       | 39-1/16"-45" | 455S      | 455H      | 455F     | 45-1/16"-51" | 455S      | 455H      | 455F     |

*Note: This chart illustrates the most common types of hinging and door opening sizes. For unusual door details, contact Glynn-Johnson for availability.*

| BHMA/ANSI, A156.8 & FED. Spec. Cross Reference |        |            |
|--|--------|------------|
| G-J Model                                      | BHMA*  | FED. Spec. |
| 451-455 H                                      | C05511 | 1166       |
| 451-455 S                                      | C05541 | 1166A      |
| 451-455 F                                      | C05531 | 1164       |

\* First numeral (0) designates optional material.

To specify:

Brass/bronze material, change 0 to 1 (i.e. C15511)

Stainless Steel Material, change 0 to 5 (i.e. C55511)

Steel material, change 0 to 8 (i.e. C85511)

**585 SOUTH ETON ROAD, P.O. BOX 2010, BIRMINGHAM, MI 48012-2010**  
**CALL: 1-800-642-2403 FAX: 1-800-642-2406 ASK FOR: GREG**