

# Solid Plastic Polyethylene

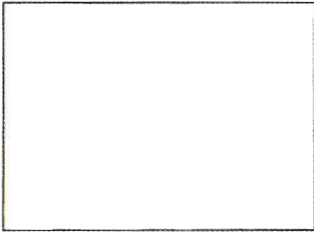


**AMPCO**

[www.ampco.com](http://www.ampco.com)

Standard Color Selector for Ampco High Density Polyethylene (HDPE) Toilet Partitions

<b>Ampco Florida</b> 11400 NW 36 Avenue Miami FL 33167 Phone: 305/821-5700 Toll free fax: 866/216-5300 florida@ampco.com	<b>Ampco Tennessee</b> 1200 Violet St Morristown TN 37814 Phone: 423/586-3993 Toll free fax: 866/902-5370 tennessee@ampco.com	<b>Ampco Texas</b> 201 Railroad Avenue Sanger TX 76266 Phone: 940/458-7401 Toll free fax: 866/372-5300 texas@ampco.com	<b>Ampco Washington</b> 4520 B Street Suite B Auburn WA 98001 Phone: 253/852-5900 Toll free fax: 866/323-5300 washington@ampco.com
---	--	---	---



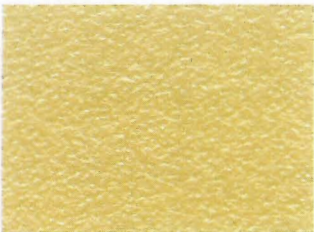
White



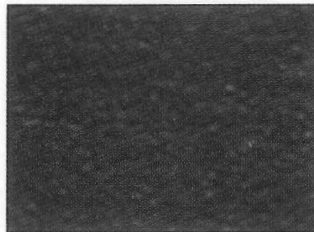
Hunter



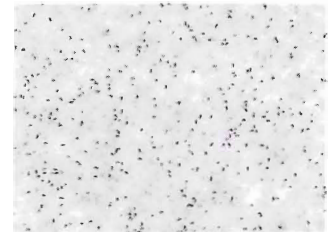
Frost



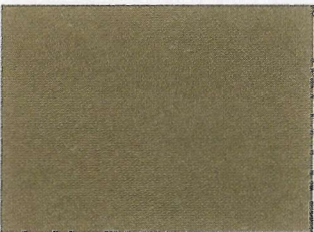
Khaki



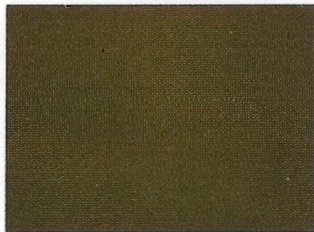
Marine Blue



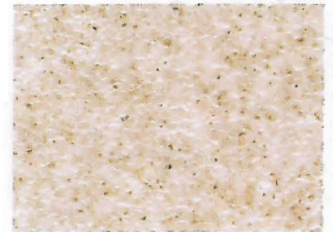
Indigo



Ash Grey



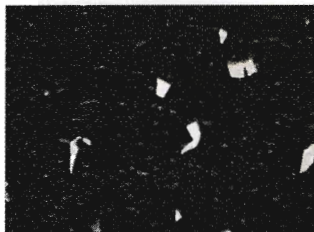
Burgundy Wine



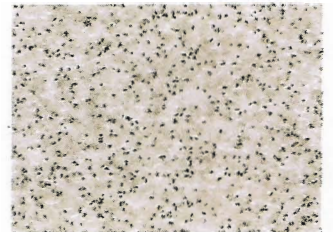
Sable



Black



Black Confetti



Charcoal

Select from Stainless Steel Stirrup- type, Continuous brackets or continuous Solid Plastic brackets. Ampco standard bracket is Aluminum Stirrup- type. Matching shoes and Brackets available in solid colors only.

These are Ampco standard Solid Plastic High Density Polyethylene (HDPE) color selections. They are printed reproductions of color.

**Please contact factory for actual samples of color and finish.**

The standard finish is a textured finish. Solid plastic material shall be nominal 1" thick polymer resin construction. Additional colors are available but may carry an upcharge. Contact the factory for pricing and availability.

Ampco manufactures High Pressure Laminate, Phenolic, Powder-Coated Steel, Stainless Steel, Solid Plastic and Solid Surface Toilet Partitions and Architectural Wood Doors.