

Truth Roto Gear Awning Operator

ROBERT BROOKE AND ASSOCIATES

FIG. 1 APPLICATION OF TRUTH ROTO GEAR AWNING OPERATOR

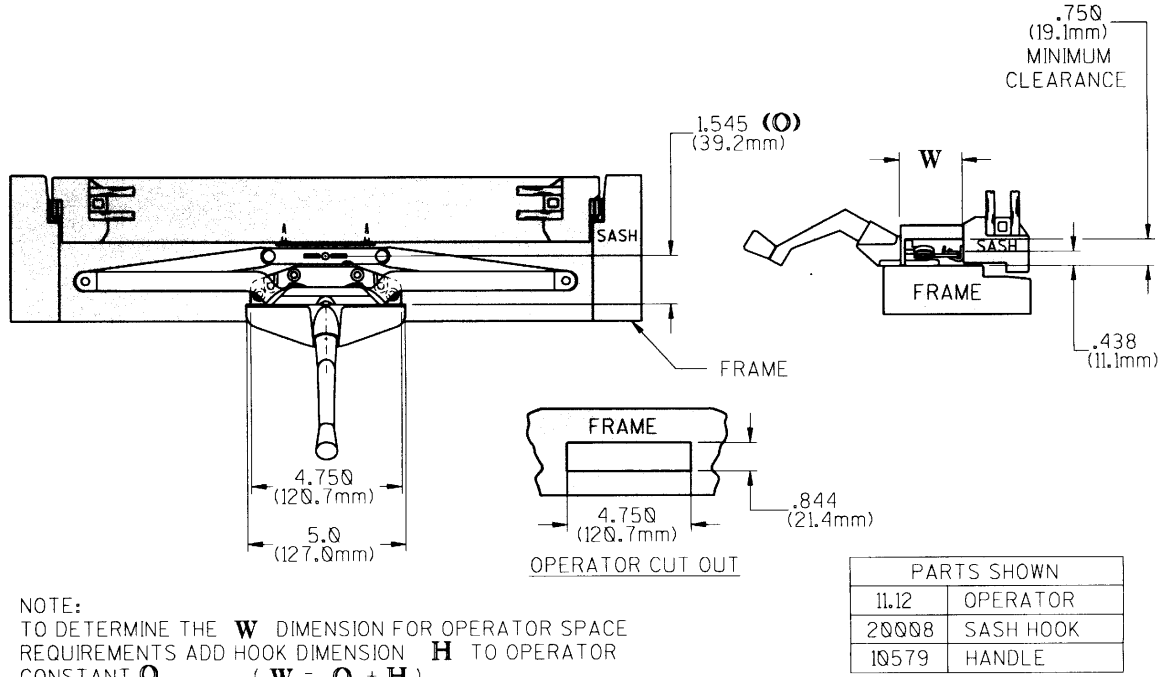
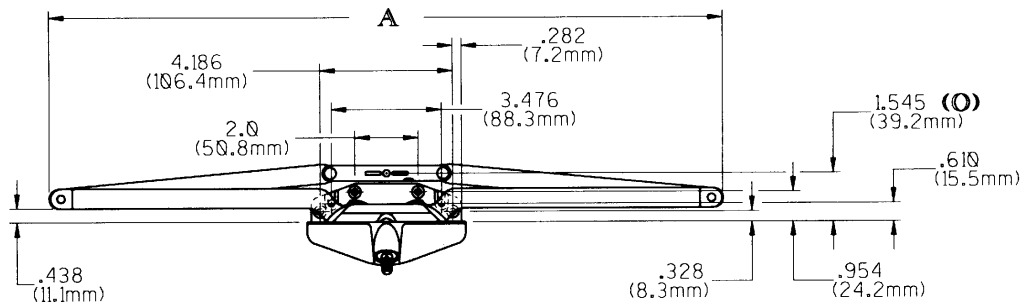


FIG. 2 ROTO GEAR AWNING OPERATOR (SINGLE PULL)



OPERATOR NO.		A OVERALL LENGTH	APPROXIMATE SASH OPENING
STEEL	SST		
11.10	11.29	21.500 (546.1mm)	15.750 (400.1mm)
11.12	11.32	16.125 (409.6mm)	10.500 (266.7mm)
11.30	11.28	12.0 (304.8mm)	6.0 (152.4mm)

AVAILABLE SASH HOOKS		H DIMENSION
PART NUMBER	MATERIAL	
20008	STEEL	+ .455 (11.5mm)
30764	SST	+ .455 (11.5mm)
40181	STEEL	+ .455 (11.5mm)
• 31336	STEEL	± .205 (5.2mm)
40543	STEEL	+ .890 (22.6mm)

•31336 MAY ADD OR SUBTRACT FROM **O**

RECOMMENDED SCREWS:

WOOD: 4 (P/N 19380) #10 X 1.0 PHILLIPS, FLAT HEAD, SHEET METAL SCREWS (P/N 19390 SST)

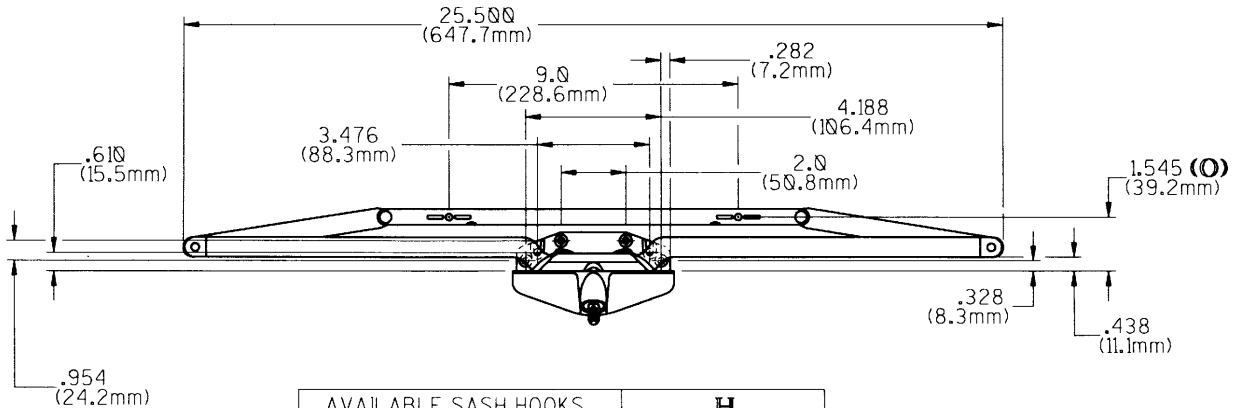
PVC/METAL: 4 - #10 PHILLIPS, FLAT HEAD SCREWS (LENGTH AND THREAD TYPE DETERMINED BY PROFILE)

585 SOUTH ETON ROAD, P.O. BOX 2010, BIRMINGHAM, MI 48012-2010
CALL: 1-800-642-2403 FAX: 1-800-642-2406 ASK FOR: GREG

Truth Roto Gear Awning Operator

ROBERT BROOKE AND ASSOCIATES

FIG. 3 ROTO GEAR AWNING OPERATOR (DUAL PULL)



AVAILABLE SASH HOOKS		H
PART NUMBER	MATERIAL	DIMENSION
(2) 20008	STEEL	+ .455 (11.6mm)
(2) 30764	SST	+ .455 (11.6mm)
(2) *31336	STEEL	± .205 (5.2mm)
(2) 40543	STEEL	+ .890 (22.6mm)

* 31336 MAY ADD OR SUBTRACT FROM \varnothing

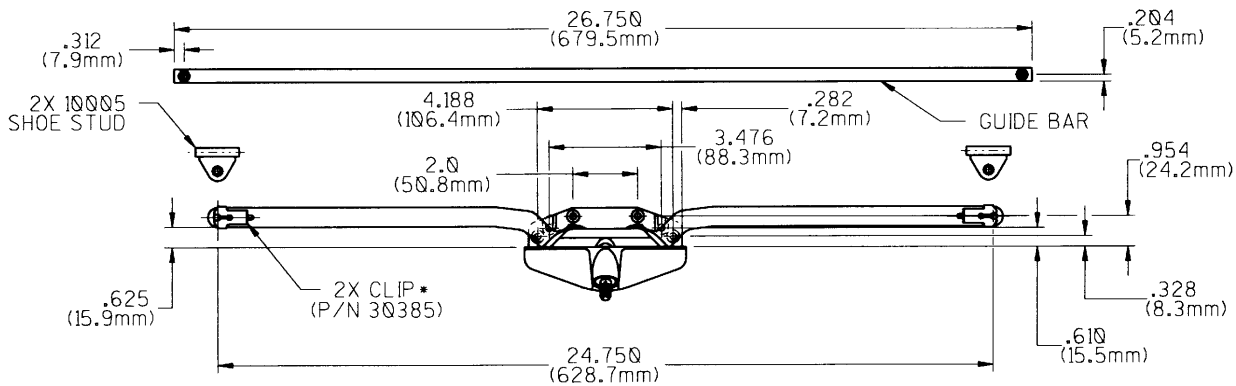
RECOMMENDED SCREWS:

WOOD: 4 (P/N 19380) #10 X 1.0 PHILLIPS, FLAT HEAD, SHEET METAL SCREWS (P/N 19390 SST)

PVC/METAL: 4 - #10 PHILLIPS, FLAT HEAD SCREWS (LENGTH AND THREAD TYPE DETERMINED BY PROFILE)

OPERATOR PART NO.		APPROXIMATE
STEEL	SST	SASH OPENING
11.14	11.27	14.500 (368.3mm)

FIG. 4 ROTO GEAR AWNING OPERATOR (GUIDE BAR)



RECOMMENDED SCREWS:

W=2.0 (50.8mm)

WOOD: 4 (P/N 19380) #10 X 1.0 PHILLIPS, FLAT HEAD, SHEET METAL SCREWS (P/N 19390 SST)

PVC/METAL: 4 - #10 PHILLIPS, FLAT HEAD SCREWS (LENGTH AND THREAD TYPE TO BE DETERMINED BY PROFILE)

GUIDE BAR: 2 (P/N 19240) #8 X 1.0 PHILLIPS, FLAT HEAD, SHEET METAL SCREWS

OPERATOR NUMBER	GUIDE BAR	ARM MATERIAL	APPROXIMATE SASH OPENING
11.16	30568	STEEL	10.0 (254.0mm)
11.21		SST	

NOTE: SHOE STUD AND GUIDE BAR MUST BE ORDERED SEPERATELY.

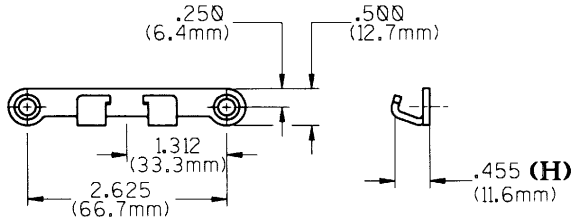
*30385 CLIPS INCLUDED WITH OPERATOR.

585 SOUTH ETON ROAD, P.O. BOX 2010, BIRMINGHAM, MI 48012-2010
CALL: 1-800-642-2403 FAX: 1-800-642-2406 ASK FOR: GREG

Truth Roto Gear Awning Operator

ROBERT BROOKE AND ASSOCIATES

FIG. 5 SASH HOOK 20008 (SST 30764)



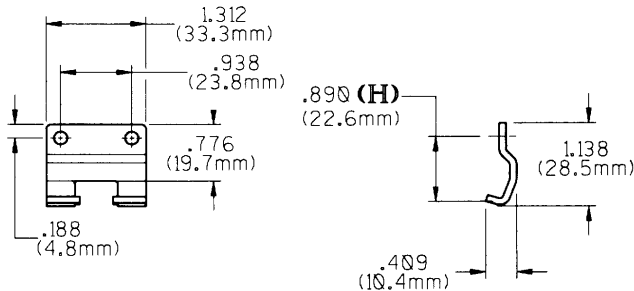
RECOMMENDED SCREWS:

WOOD: 2 (P/N 19240) #8 X 1.0 PHILLIPS, FLAT HEAD, SHEET METAL SCREWS

PVC/METAL: 2 - #8 PHILLIPS, FLAT HEAD SCREWS (LENGTH AND THREAD TYPE DETERMINED BY PROFILE)

STAINLESS STEEL SCREWS REQUIRED WITH SST SASH HOOK

FIG. 6 SASH HOOK 40543

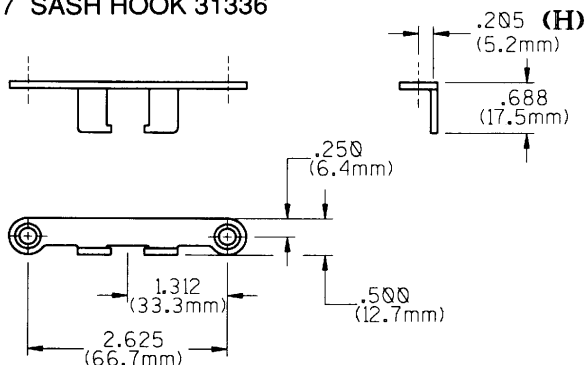


RECOMMENDED SCREWS:

WOOD: 2 (P/N 19230) #8 X 1.0 PHILLIPS, PAN HEAD, SHEET METAL SCREWS

PVC/METAL: 2 - #8 PHILLIPS, PAN HEAD SCREWS (LENGTH AND THREAD TYPE DETERMINED BY PROFILE)

FIG. 7 SASH HOOK 31336

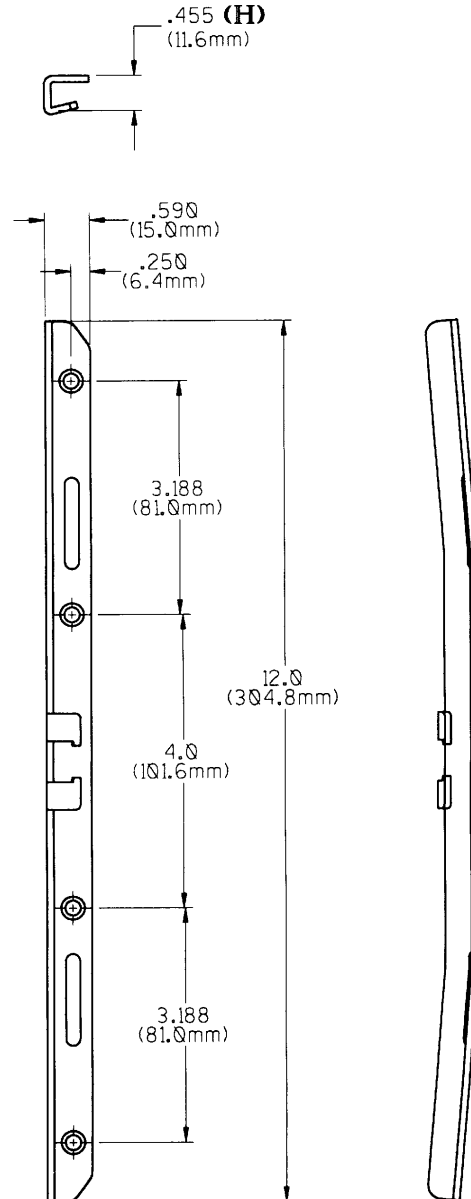


RECOMMENDED SCREWS:

WOOD: 2 (P/N 19240) #8 X 1.0 PHILLIPS, FLAT HEAD, SHEET METAL SCREWS

PVC/METAL: 2 - #8 PHILLIPS, FLAT HEAD SCREWS (LENGTH AND THREAD TYPE DETERMINED BY PROFILE)

FIG. 8 TORSION BAR 40181



RECOMMENDED SCREWS:

WOOD: 4 (P/N 19240) #8 X 1.0 PHILLIPS, FLAT HEAD, SHEET METAL SCREWS

PVC/METAL: 4 - #8 PHILLIPS, FLAT HEAD SCREWS (LENGTH AND THREAD TYPE DETERMINED BY PROFILE)

585 SOUTH ETON ROAD, P.O. BOX 2010, BIRMINGHAM, MI 48012-2010
CALL: 1-800-642-2403 FAX: 1-800-642-2406 ASK FOR: GREG