

# Glides

By Furniture Manufacturer *(Competitively Priced! Please scan the QR Code to see current pricing)*

## Brunswick

Black Rubber Feet with Metal Cap



CHAIR FRONT LEG  
Part No. BR1



CHAIR REAR LEG  
Part No. BR2



TABLE LEG  
Part No. BR3



Metal Replacement Caps  
For Brunswick Feet  
Part No. BR4

## American Seating



### Swivel Glides

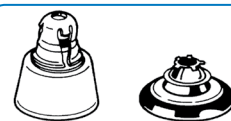
Alert Line – Self Leveling

For Round Tubing with 1-1/4" Nickel Base



A – REPLACEMENT

For 9/16" I.D. & 11/16" O.D. Tubing  
Type A Replaces Type B & C Glides  
Part No. SGR69



B and C — Obsolete

SLED BASE METAL GLIDE & RIVET

7/8" Diameter  
Part No. KGL752



## Lyon Folding Chairs

Natural Gray color rubber feet for front and rear chair legs



FRONT  
Part No. KGL1



REAR  
Part No. KGL2

Metal attaching hardware set for all 4 legs

Part No. KGL33  
\$ 8.00 / set



## Lyon

Black Rubber Foot for Stool



1-13/16" Dia.  
1-1/8" High

ALL RUBBER  
Part No. KGL 196  
  
STEEL BASE  
Part No. KGL 961

## Sico

### Table Glides



RUBBER FOLDING  
TABLE GLIDE  
For use on 3/8" O.D.  
locking leg.  
Part No. KGS37



PLASTIC TABLE GLIDE  
For use on heavy tables  
having 1" O.D. legs.  
Part No. KGS176



RUBBER TABLE GLIDE  
For use on heavy tables  
having 1" O.D. legs.  
Steel washer in base  
for added support.  
Part No. KGS100

Replacement

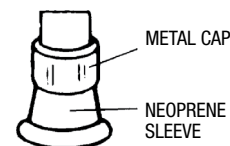


## Irwin



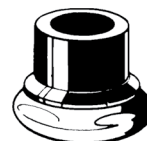
GLIDE WITH METAL CAP

For 1/2" O.D. Tubing Nickel Plated  
Part No. KG1500



METAL CAP

NEOPRENE SLEEVE



THIS NICKEL PLATED BASE  
GLIDE IS FURNISHED WITH  
METAL CAP

## Clarín

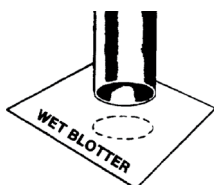
Rubber Feet



CHAIR GLIDE  
Part No. KGCL1



## How to Measure for Glides



Blotter Impression

### Tubular Metal Furniture Legs

Are easily measured by the blotter method. Specify the exact measurement you obtain—Make no allowances.  
To insure against error, we suggest that the blotter impression be mailed to us along with your order.



If in Doubt Please Send a Sample

Outside Diameter  
of Round leg



Inside Diameter

Outside Diameter  
of square leg



Inside Diameter

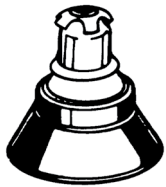
# Glides

By Furniture Manufacturer *(Competitively Priced! Please scan the QR Code to see current pricing)*

## Heywood Wakefield

Swivel Glides with 1-1/4" Base for 7/16" I.D. & 9/16" O.D. Tubing.

GLIDE WITHOUT FERRULE



Obsolete



Replacement

METAL BASE  
Part No. SGR561

GLIDE WITH FERRULE



Obsolete

METAL BASE  
Part No. SGR56



Replacement

NYLON BASE  
Part No. SGR56N



## American Desk



Obsolete



Replacement



METAL SWIVEL GLIDE  
With 1-1/4" Steel Base  
Fits 1/2" I.D. Tubing, 11/16" O.D. Tubing

Part Nos.

METAL BASE – AD69  
NYLON BASE – AD69N



ALUMINUM  
FERRULE  
Part No.  
ADFE69

N/A

## Krueger



Plastic Swivel Glides  
- Angled -



SWIVEL GLIDE  
For 7/16" I.D. and  
5/8" O.D. Tubing.  
Part No. KR625

N/A



SWIVEL GLIDE  
For 5/8" I.D. and  
3/4" O.D. Tubing.  
Part No. KR750

## American Seating / Griggs



METAL SWIVEL GLIDE  
with 1-1/4" Steel Base for 9/16"  
I.D. and 3/4" O.D. Tubing.  
Freely Swivels  
Beyond 30°

METAL BASE  
Part No. SGR75E  
NYLON BASE  
Part No. SGR75EN

## American Desk / Artco Bell / Carter Craft / Krueger Peabody / Virco



SWIVEL GLIDE with 1-1/4" Base for 5/8" O.D. Tubing.



Freely Swivels Beyond 30° Angle.  
Grips leg with an external holding clip.

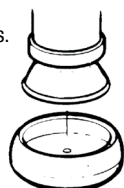
METAL BASE – Part No. SGR62A

NYLON BASE – Part No. SGR62AN

## Nylon Glide Caps (100/box)



No dismantling of steel glide necessary.  
Glide cushions merely snap over worn out steel glides.  
Made from Nylon  
Won't de-color or scratch floors.  
Color: Natural White



CUP PART NO.	O.D. STEEL GLIDE
KGC 1	1-1/16" +
KGC 2	1-3/16" +
CUP PART NO.	O.D. STEEL GLIDE
KGC 2-1/2	1-7/32"
KGC 3	1-1/4 +

## Glide Puller



Speeds Removal of  
Old Glides

Part No. KGLIDPUL2



**DISCOUNT** available on  
most glides:  
1-199 pieces = list price  
**OR**  
200+ pieces of  
One Style = 10% savings

**CHART KEY :** † For Heywood Wakefield Glides. + Indicates most common and popular sizes. \* This size equals the outside diameter of the steel glide to be capped.

Robert Brooke & Associates • P.O.Box 2010 • Phone: 800-642-2403 • Fax: 800-642-2406 • www.robertbrooke.com

Copyright © 2014 Robert Brooke & Associates. This catalog is copyrighted. No portion may be reproduced without the permission of Robert Brooke & Associates.

# Glides

**By Type** (Competitively Priced! Please scan the QR Code to see current pricing)

## Nail Type (for Wood Furniture)



NYLON BASE 100/BOX

GLIDE BASE DIAMETER	GLIDE PART NO.
7/8"	NG-87P
1-1/8"	NG-12P



NICKEL BASE 100/BOX

GLIDE BASE DIAMETER	GLIDE PART NO.
7/8"	NG-87
1-1/16"	NG-106
1-1/4"	NG-125



## 3-Prong Slides (for Wood Furniture)

(SHOULD BE APPROXIMATELY HALF THE DIAMETER OF FURNITURE LEG.)



NYLON BASE FINISH 100/BOX

BASE DIA.	Part Number
5/8"	SG-62
7/8"	SG-87



CHAIR GLIDES

## Stem Type (Nickel Base)

Glide is Furnished With Nut



Thread	Base Dia.	Stem Length	Part Number
8-32	1-1/16"	1/2"	STG-832
1/4-20	1-1/16"	1/2"	stg-1420



## Non-Swivel Leg (Nickel Base)

Adjustable Type



Thread	Base Dia.	Stem Length	Part Number
1/4-20	1-1/16"	1"	LA-10625
5/16-18	1-1/4"	1"	LA-13831
3/8-16	1-1/4"	1-1/2"	LA-13838



## Swivel Legs

### Nylon Base (Adjustable)



Thread	Base Dia.	Stem Length	Part Number
1/4-20	1-1/8"	1-1/8"	SLA-12525P
5/16-18	1-3/4"	1-1/2"	SLA-17531P



## Heavy Duty Non-Swivel Leg (Nylon Base)

Adjustable Type



Thread	Base Dia.	Stem Length	Part Number
1/4-20	1-3/4"	1-1/2"	LA-17525P
5/16-18	1-3/4"	1-1/2"	LA-17531P



### Nickel Base (Adjustable)



Thread	Base Dia.	Stem Length	Part Number
1/4-20	1-1/4"	1-1/8"	SLA-12525
3/8-16	1-3/4"	1-1/2"	SLA-17538



## Adjustable Height Swivel Glide (Nickel Base)



Base Dia.	I.D. Tubing	O.D. Tubing	Part Number
1-1/4"	1/2"	5/8"	SLA-2562



## Threaded Spring Clips

### Square Tubing



LEG O.D.	LEG I.D.	PART NO.
3/4"	5/8"	CLS75
7/8"	3/4"	CLS87
1"	7/8"	CLS100
1-1/8"	1"	CLS112
1-1/4"	1-1/8"	CLS125



### Round Tubing



LEG O.D.	LEG I.D.	PART NO.
5/8"	1/2"	CLR62N
3/4"	5/8"	CLR75
7/8"	3/4"	CLR87
1"	7/8"	CLR100
1-1/8"	1"	CLR112
1-1/4"	1-1/8"	CLR125



For 1/4-20 Thread Adapts to LA-10625 or SLA-12525

\*Outside Holding Clip

## T-Nuts (for Wood Furniture)



THREAD	ADAPTS TO	PART NO.
1/4-20	LA-10625 LA-17525P SLA-12525 SLA-12525P	T-NUT-25
5/16-18	LA-13831 LA-17531P SLA-17531	T-NUT 31
3/8-16	SLA-17531P LA-13838 SLA-17538 SLA-17538P	T-NUT 38



NEXT DAY DELIVERY AVAILABLE



# Glides

**By Type** *(Competitively Priced! Please scan the QR Code to see current pricing)*

## Tube Caps (Nickel Base Finish)



**ROUND TUBING**  
6-Prong Tube Caps are "pushed in" easily and hold securely in 16 or 18 gauge round tubing.

Packaged 100 Per Box

LEG O.D.	BASE DIAMETER	PART NO.
5/8"	5/8"	TC-62
3/4"	3/4"	TC-75
7/8"	7/8"	TC-87
1"	1"	TC-100
1-1/4"	1-1/4"	TC-125



## Non-Swivel Glides for Round Tubing (Nickel Plated Metal Base)



WITHOUT FERRULE  
(Internal)

CHAIR LEG		GLIDE	
O.D.	I.D.	BASE DIA.	PART NO.
5/8"	7/16"	1-1/16"	NSR-62*
	1/2", 9/16"		
3/4"	9/16", 5/8"	1-1/16"	NSR-75*
7/8"	3/4"	1-1/16"	NSR-87



WITH FERRULE  
(External)

CHAIR LEG		GLIDE	
O.D.	I.D.	BASE DIA.	PART NO.
1"	7/8"	1-1/16"	NSR-100
1-1/8"	1"	1-1/4"	NSR-112
1-1/4"	1-1/8"	1-1/2"	NSR-125



## Swivel Glides (for Round Tubing)

### Metal Base

WITHOUT FERRULE (Internal)



CHAIR LEG		GLIDE	
O.D.	I.D.	BASE DIA.	PART NO.
9/16"	7/16"	1-1/4"	SGR-561
5/8"	1/2"	1-1/4"	SGR-621
11/16"	9/16"	1-1/4"	SGR-69
3/4"	5/8"	1-1/4"	SGR-751
7/8"	3/4"	1-1/4"	SGR-87



9/16" HIGH FERRULE (External)



CHAIR LEG		GLIDE	
O.D.	I.D.	BASE DIA.	PART NO.
9/16"	7/16"	1-1/4"	SGR-56
5/8"	1/2"	1-1/4"	SGR-62
* 5/8"	1/2"	1-1/4"	SGR-62A
3/4"	9/16"	1-1/4"	SGR-75E
3/4"	5/8"	1-1/4"	SGR-75



\* Outside Holding Clip

9/16" HIGH FERRULE (External)



CHAIR LEG		GLIDE	
O.D.	I.D.	BASE DIA.	PART NO.
7/8"	3/4"	1-1/4"	SGR-87E
1"	7/8"	1-1/4"	SGR-100



### Nylon Base

9/16" HIGH FERRULE (External)



CHAIR LEG		GLIDE	
O.D.	I.D.	BASE DIA.	PART NO.
9/16"	7/16"	1-1/4"	SGR-56N
5/8"	1/2"	1-1/4"	SGR-62N
5/8"	1/2"	1-1/4"	SGR-62AN*
3/4"	9/16"	1-1/4"	SGR-75EN
3/4"	5/8"	1-1/4"	SGR-75N
7/8"	3/4"	1-1/4"	SGR-87EN
1"	7/8"	1-1/4"	SGR-100N
1-1/8"	1"	1-1/4"	SGR-112N



\*\*1" High Ferrule

\*Outside Holding Clip



**DISCOUNT** available on  
most glides:

1-199 pieces = list price

**OR**

200+ pieces of  
One Style = 10% savings

## Swivel Glides for Square (Nickel Plated Metal Base)

WITHOUT FERRULE (Internal)



CHAIR LEG		GLIDE	
O.D.	I.D.	BASE DIA.	PART NO.
3/4"	5/8"	1-1/16"	SGS-75
13/16"	11/16"	1-1/16"	SGS-81
7/8"	3/4"	1-1/16"	SGS-87
1"	7/8"	1-1/16"	SGS-100
1-1/8"	1"	1-1/16"	SGS-112



PLASTIC FERRULE (External)



CHAIR LEG		GLIDE	
O.D.	I.D.	BASE DIA.	PART NO.
13/16"	11/16"	15/16"	SGS-81E
7/8"	3/4"	1-1/16"	SGS-87E



**NOTE:** Other styles of glides are available for sufficiently large size orders. Unless specifically requested, a glide may be sent which is not an exact duplicate but which will be as good.

# Glides

**By Type** (Competively Priced! Please scan the QR Code to see current pricing)

## Plastic Chair Tips

### Round Tubing (100/Box)



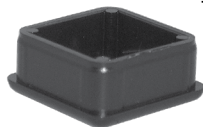
For Krueger Chairs,  
Tables & Other Furniture

CHAIR LEG O.D.	COLOR	PART NO.
5/8"	TAN	PCT 62T
	GRAY	PCT 62G
	BLACK	PCT 62B
3/4"	TAN	PCT 75T
	GRAY	PCT 75G
	BLACK	PCT 75B
7/8"	TAN	PCT 87T
	GRAY	PCT 87G
	BLACK	PCT 87B
1"	TAN	PCT 100T
	GRAY	PCT 100G
	BLACK	PCT 100B
	WHITE	PCT 100W
1-1/8"	TAN	PCT 112T
	GRAY	PCT 112G
	BLACK	PCT 112B



### Square Tubing (100/Box)

Available in Black Only

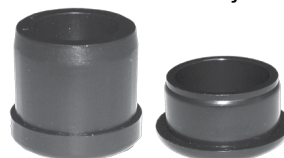


LEG O.D.	LEG I.D.	PART NO.
3/4"	5/8"	PS75
13/16"	11/16"	PS81A
13/16"	3/4"	PS81B
7/8"	13/16"	PS87A
7/8"	3/4"	PS87B
1"	15/16"	PS100A
1"	7/8"	PS100B
1-1/8"	1"	PS112
1-1/4"	1-1/8"	PS125
1-1/2"	1-3/8"	PS150



### Round Tubing (100/Box)

Available in Black Only

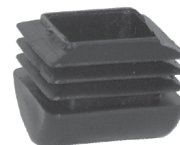


LEG O.D.	LEG I.D.	PART NO.
5/8"	1/2"	PR62
3/4"	5/8"	PR75A
3/4"	11/16"	PR75B
7/8"	3/4"	PR87A
7/8"	13/16"	PR87B
1"	7/8"	PR100A
1-1/4"	1-1/8"	PR125
1-1/2"	1-3/8"	PR150



### Rocker Type (100/Box)

Use on Slanted Square Legs  
Available in Black Only



LEG O.D.	LEG I.D.	PART NO.
3/4"	5/8"	KPSR-75
13/16"	11/16"	KPSR-81
7/8"	3/4"	KPSR-87
1"	7/8"	KPSR-100A
1"	15/16"	KPSR-100B



### Rubber Chair Tips (100/Box)



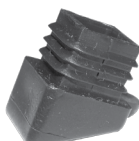
Round Legs  
For Hampden, Krueger  
& Samsonite

CHAIR LEG O.D.	COLOR	PART NO.
3/4"	BLACK	RCT75B
	GRAY	RCT75G
7/8"	BLACK	RCT87B
	GRAY	RCT87G
1"	BLACK	RCT100B
	GRAY	RCT100G

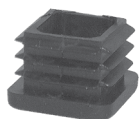


### FITS 3/4" O.D., 5/8" I.D. SQUARE TUBING

100/BOX



SLANTED  
Part No.  
KPS-75L

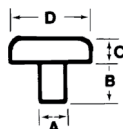


STRAIGHT  
Part No.  
KPS-75



### Stacking Chair Bumpers

(100/Box)



STEM DIA.	LGTH. (A)	BASE HGHT. (C)	BASE DIA. (D)	PART NO.
1/4"	3/8"	3/16"	1/2"	SCB2550
1/4"	7/16"	3/16"	3/4"	SCB2575



### Virco Sled Based Glides

Made of Plastic (100/Box)



For 5/8" Sled Diameter.  
Glide has 3/4" base Dia.  
Part No. KS062



### Rubber Crutch Tips (100/Box)



CHAIR LEG O.D.	PART NO. WHITE	PART NO. BLACK
5/8"	CRT-62	CRT-62B
3/4"	CRT-75	CRT-75B
7/8"	CRT-87	CRT-87B
1"	CRT-100	CRT-100B
1-1/8"	CRT-112	CRT-112B
1-1/4"	CRT-125	CRT-125B



### Plastic Plug Bumpers

(100/Box)

For Tubular Folding Chair Bumpers are used at  
the tip of the rear legs. Plug fits 13/16" I.D. leg.



Part No. KPPB87  
Color: Tan



For 7/16" Sled Diameter.  
1-3/4" Long

Part No. KS0175



# Felt Base Glides



Felt on plastic base glides are a great way to protect your floors

## Whisper Glides



Similar to felt pads except have 1/4" carpeting on sturdy carpet backing. 1" diameter, gray color; 120 per bag. Adhesive included.

Part No. KWG100



## SnapGlides



Caps fit over 1-1/4" diameter glides. White color.

Part No. KCG014

Deep Cup "SnapGlides"

Part No. KCG014DP



## "Stemglide"



For sled base chair. 1/4" diameter, 1/2" high stem. 7/8" diameter base. White color.

Part No. KS078

\$ .25 each



## Nail Glide

- Felt on Brown Base



BASE DIAMETER	PART NO.
3/4"	NG75F
7/8"	* NG87F
* MOST POPULAR	



## "Levelers 1/4 - 20"



1/4" - 20 threaded stem, 1" diameter, brown base.

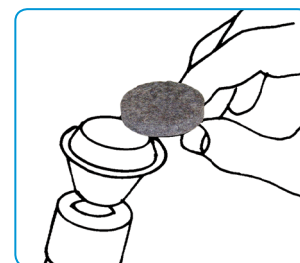
Part No. LA2145



## Felt Pads



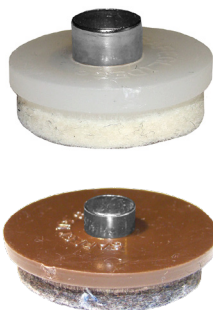
- Prevents Scratching
- Reduces Noise
- Installs in Seconds
- Self Adhesive
- About 3/16 Thick



DIAMETER	PART NO.
3/4"	KGP75
1"	KGP100
1-1/2"	KGP150



## Tap-On 'Safeglides' (for wooden legs)



BASE DIA.	COLOR	PART NO.
7/8"	WHITE	NG 1015
7/8"	BROWN	NG 2015
1"	WHITE	NG 1010
1"	BROWN	NG 2010
1-1/2"	WHITE	NG 1005
1-1/2"	BROWN	NG 2005



## Felt Strips

Self-Adhesive 1/8" thick  
1/2" wide x 5" long

Part No. KGP165  
\$4 per bag of 6

