

SOLID PLASTIC (HDPE)

Solid plastic toilet partitions are the ideal choice for high-traffic areas as well as high-humidity applications and corrosive environments. They are environmentally safe and sanitary, never need painting and will not easily dent, rust or delaminate. With a textured finish to hide the effects of vandalism, it is the low maintenance material of choice as minor scratches can often be repaired.

The High Density Polyethylene (HDPE) panels are virtually impenetrable by water, odor, mildew and soap and most commercial cleaning agents will not damage the surface.

Five of the most popular colors are now available in 100% post-consumer material.

FAST TRACK: 48 Hour Shipping

Available in all standard colors shown below – in Floor Anchored/Overhead Braced style only.



COLOR SELECTION:



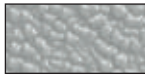
White 9201



Cream 9235



Tan 9202*



Gray 9200*



Charcoal 9237*



Azure 9231



Moss 9233*



Blue 9509



Burgundy 9211



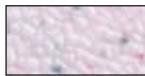
Black 9205*



Black Confetti 9217



Folkstone Gray 9400



Garnet Speckle 9501



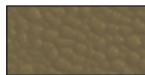
Hunter Green 9508



Ivory Essence Speckle 9500



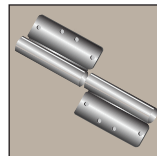
Mocha 9212



Olive 9223

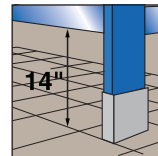
** Available in 100% post-consumer recycled material*

CONSTRUCTION FEATURES:



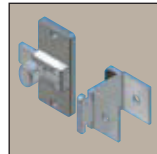
8" Aluminum Wrap-Around Hinge

Mainstream choice.



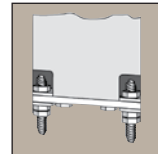
55" High Doors and Panels

14" clearance from floor.



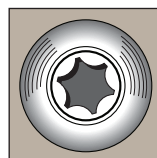
Emergency Access

Meets ADA requirements. Slotted keeper coupled with gravity hinges allows access in an emergency.



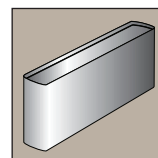
Simplified Mounting System

Attach mounting system, insert pilaster and adjust height and level by turning the lock nut adjusters.



Vandal-Resistant Fasteners

Special driver installs fasteners which virtually eliminates unauthorized removal and ensures easy installation.



Shoe Construction

Stainless steel, type 304, with #4 satin finish trim shoes are hemmed top and bottom for rigidity and sleek appearance.

OPTIONS:

- Continuous Stainless Steel Hinges
- Integral Hinges
- Vault Hinge
- No Sight Hardware
- Continuous Stainless Steel Brackets

- Continuous Aluminum Brackets
- Continuous Plastic Brackets
- Plastic Shoes
- Anti-Microbial Additives
- Ultimate Privacy™ Height Options